

User's Guide

IMPORTANT:

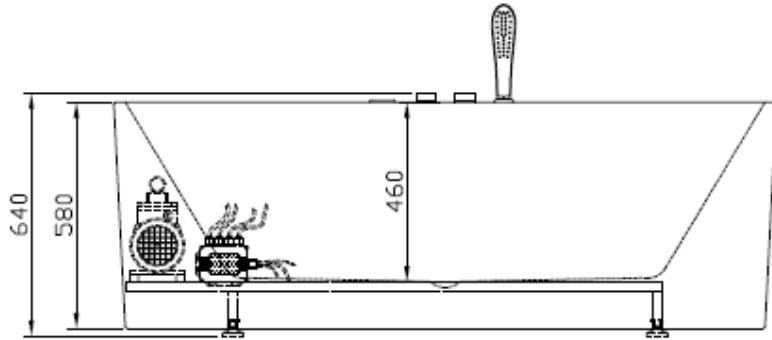
Read this manual before proceeding with installation of the bathtub and keep it with the other accompanying documents.
This manual is valid for the installation of tubs both with and without whirlpool.

MODEL: 03-VMB-2605-GW

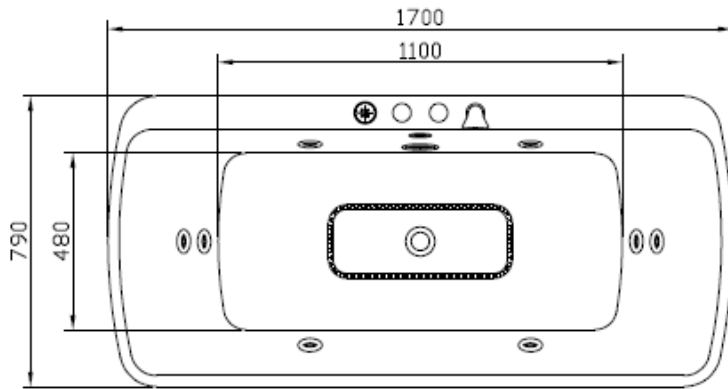
SIZE:1700*800*650mm



Install the diagram

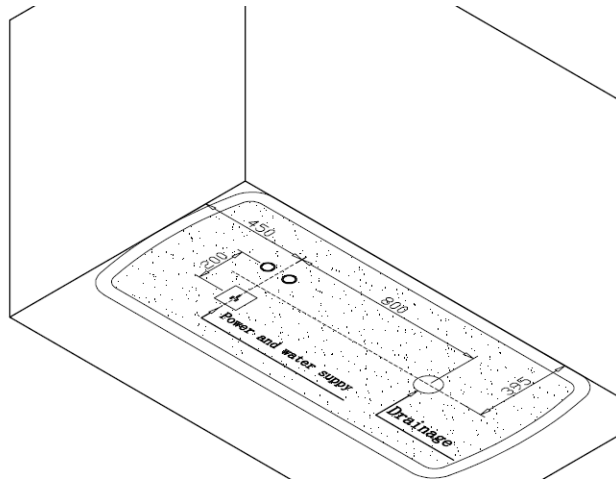
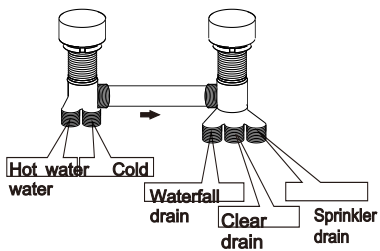


Plane chart



sketch


Tap takes over




VII. Precautions:

1. This system must be installed by a qualified technician. The leakage switch plug should be installed in a place where it is convenient to control.
2. It must be grounded firmly during installation. If the grounding is bad, the factory will not be responsible for it!
3. The motor must be installed in a stable and stable manner, and the casing must be firmly grounded!
4. The whole machine is in standby mode. If it is not used for a long time, please pull the main power switch off.
5. The load capacity of the power supply line must be considered during installation, otherwise it will affect the normal operation of the system or a safety accident!
6. All electrical and electronic wire components must be installed in consideration of moisture and moisture resistance.

7. MP3/Bluetooth music playback function:

Press () to turn on the system, and the system simultaneously activates the audio function to set the Bluetooth status.




(1) Bluetooth music function:



Press () to start the system, and the system will start the audio function to set the Bluetooth status. At this time, the system will search for the Bluetooth device of the mobile phone. When the pairing is successful, the voice prompt will be successfully connected. The first connection must be Bluetooth pairing. The specific operations are as follows:

Turn on your phone's Bluetooth settings → Start Bluetooth → Search device → pair → A successful pair of speakers will have a music sound and complete the connection.

Play music from your phone in Bluetooth mode:

(2) Play/Pause: Short press () to play or pause control.

(3) Selecting songs up and down: Long press (), when “CH” is displayed, press the () or () button to select the song up or down.

(4) Volume control: Press and hold the () or () button to adjust the volume and display “VOL-” or “VOL+” .

1、Electricity parameter

Rated voltage	Rated power	Rated electric current	Reference circuit voltage
220VAC	3300W	<4A	12V

2、Electric installation

- 2.1 power supply's establishment should be complied with nation security standard, voltage and frequency also should be accord with product's nameplate. Especially install creepage protect switch and also check whether can connect with ground.
- 2.2 The wire collected to the massage bathtub should be fitting permanent., and the wire should be a three-core wire, the sectional acreage of each core cannot less than 12A. when wire pass the wall, it should be use bushing for protection until the AC outlet.
- 2.3 Ground wire of bathtub should be test whether works with house appliance ground wire.
- 2.4 The wire end of electricity control box should connect to the control panel, water bottom light, loudspeaker, electrical engineering and the detector protection respectively.

3、Water supply device

- 3.1 This device's hydraulic pressure is 0.2-0.4Mpa.
- 3.2 The water supply characteristics on the wall: The cold or hot water supplies inside the bathroom also establish in the shelter of the massage tub, use the hose to connect with the cold or hot joint of the tub. the pipe towards is decide by the customer, the machine do not go with the hose.

4 Installation introduction

- 4.1 Before install, must consider the place of install massage bathtub whether can support this device's pressure.
- 4.2 Place the massage bathtub on the install position, adjust level to make the drain system smooth.
- 4.3 Adjust the leg's screw to make sure all of the screw touch ground completely.
- 4.4 Install the drain hose, and make some measure to against on the connector.
- 4.5 Fix cold and hot water-pipe well, then install the showerhead. And then put drain into downcomer, finally connect with power and make sure whether device connected with ground can work.

5、Using Method

- 5.1 Turn on faucet, adjust water's temperature, add water to the massage bathtub. when the highest water level exceed the highest nozzle about 20-30mm and reach the detector, press the switch button to let the electric machine.
- 5.2 Revolve the adjust switch, and choose the proper surf pressure.
- 5.3 After finishing if should turn off pump at first, then open drain button, when water is all out, please make a clean of bathtub to keep in good.

6、Clean and keep in good condition

- 6.1 usually use soft cloths and general liquid cleanser can wash away dirt, but forbid to use the cleanser with acetone or the ammonia composition; when disinfect, forbid to use the disinfectant contained the formaldehyde.
- 6.2 the dirty spot of surface can use the toothpaste to wipe with the soft cloth.
- 6.3 to the low-grade chafe of the surface or burned by cigarette, can soak in water to whet with 2000# levigation sand paper, then polishing.
- 6.4 If the electroplate piece contain stain, use the soft cloth to wipe lightly, avoid to wiping with coarse cloth.
- 6.5 often clean up the backwater net cover, prevent it from stop;
- 6.6 Check whether have break on pipe and waterway aperiodically.

- 6.7 Please check whether there is fall off or breakage on wire, switch,connector plugs so that repair in time.
- 6.8 In order to keep to use in a long term ,please remember, don't use more than 3 hours continually.

7、Fault eliminate

Fault	Cause	Way
Machine or equipment doesn't work	Voltage unstable	Check circuitry
	Power connector didn't connect well or open circuit	Insert again or change power line
	The windpipe connect air switch fall off or break	Connect again or change
	The air switch failure	Change
Big nose of machine	Power's parameter is not same as nameplate	Connect with supplier
	Fixed screw did'n fix or fall off	Fix tightly again
	Support's leg screw did not touch ground	Adjust
water pipe leak out	Aging	Change
	The joint did not fix well	Fix again
	Water pipe or accessory leak	Change

Remark: except this fault, please according to situation to resolve, or find experienced people to repair.

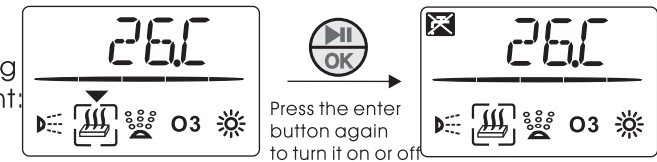
8、special remind

- 8.1 please find qualified people to install bathtub according to introduction.
- 8.2 when you are using it, first of all you have to inject the cold water and then inject the hot water. Don't inject the hot water first.
- 8.3 bathtub's machine must connect on ground, support must use 1.5mm² yellow/green double wire connect with ground and check whether effective.
- 8.4 please do not turn on machine without water, before draining should turn off machine.
- 8.5 children should be looked after in bathtub.
- 8.6 bathtub's temperature can't higher than people average temperature, and the best is 32-37centigrade.
- 8.7 after shower ,please cut off power.
- 8.8 if have these situation ,please do not enter into massage bathtub.
 - 8.8.1 younger than 4 years old's child;
 - 8.8.2 blood circulation unstabled people;
 - 8.8.3 sot;
 - 8.8.4 suffer from flu;
 - 8.8.5 heart disease;
 - 8.8.6 already have sauna;
 - 8.8.7 after meal in half a hour;

Remark: our company has the right to modify the above mention without further notice.

3. Heater function:

Press the “◀” or “▶” button to point to the heating symbol, as shown on the right:

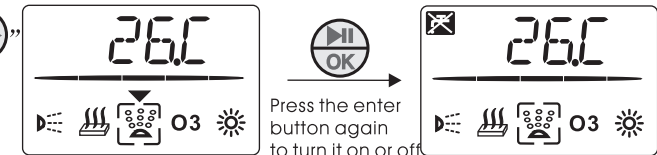


Press the enter button again to turn it on or off

Note: The heating function can only be activated after the surf function is activated, and is controlled by the set temperature. Set the temperature: press and hold (OK) for 2 seconds, then display “CH” and then press and hold (OK) for 2 seconds to set the temperature to flash. Press (◀) or (▶) to change the preset temperature. The setting value is from 30°C to 42°C. Built-in 38°C, when the water temperature reaches the set temperature, it enters a constant temperature state.

4. Bubble bath function:

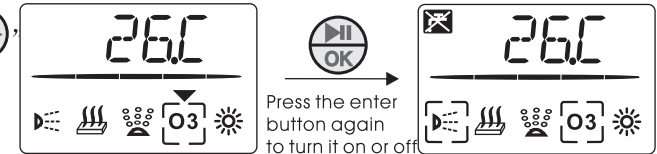
Press the “◀” or “▶” button to point to the bubble bath symbol, as shown on the right:



Press the enter button again to turn it on or off

5. Ozone function (optional):

Press the “◀” or “▶” button to point to the ozone symbol, as shown on the right:

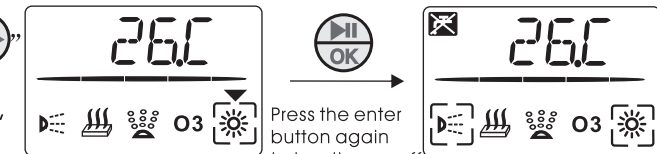


Press the enter button again to turn it on or off

Note: The scheduled working time of the ozone disinfectio

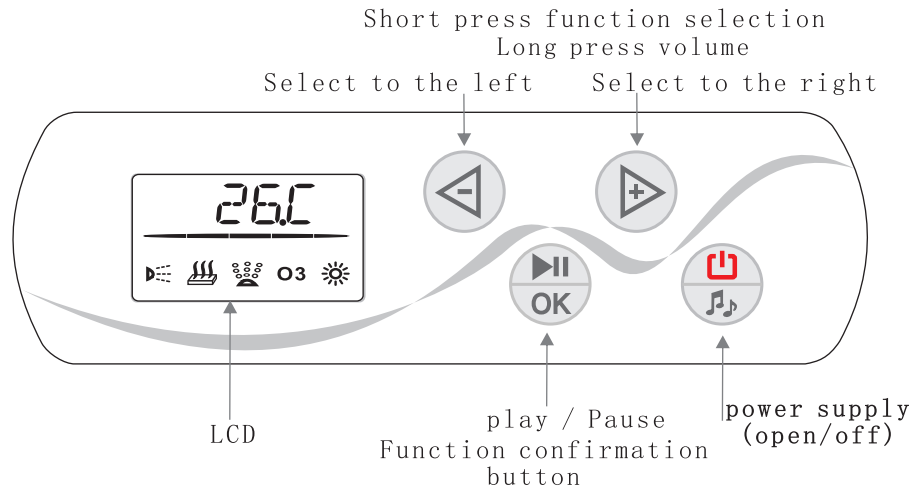
6. Underwater light function:

Press the “◀” or “▶” button to point to the underwater light symbol, as shown on the right:



Press the enter button again to turn it on or off

V. Panel function description: GD-375



VI. Instructions:

1. On/Off: Plug in the leakage switch and press the main power switch (power button) button. The display shows the measured temperature. At this time, each function setting operation can be performed according to the user's requirements. When shutting down, press the power button (power button) to turn off the system!



The long display is the measured temperature, and the interval flash is the set temperature.

2. Surfing function:



Note: The water pump is limited by the water level. When the system detects that there is water, it can be started. The pump will automatically shut down after 60 minutes of operation. When the water is short, the “ ” symbol will flash.

Bathtub User's Guide

WARNINGS

1. Please follow the instruction contained in the attached installation manual to ensure that the product is installed properly. The manufacturer will not be held liable for damages or injuries caused by improper installation.
2. Follow the instructions contained in this manual when using the product.
3. Before using the bathtub, check the local voltage that if reach to the rated voltage(pre-installation card).

CONTENTS

- Safety Precautions
- Brief Introduction
- Operation of Control Panel

I. Product Features:

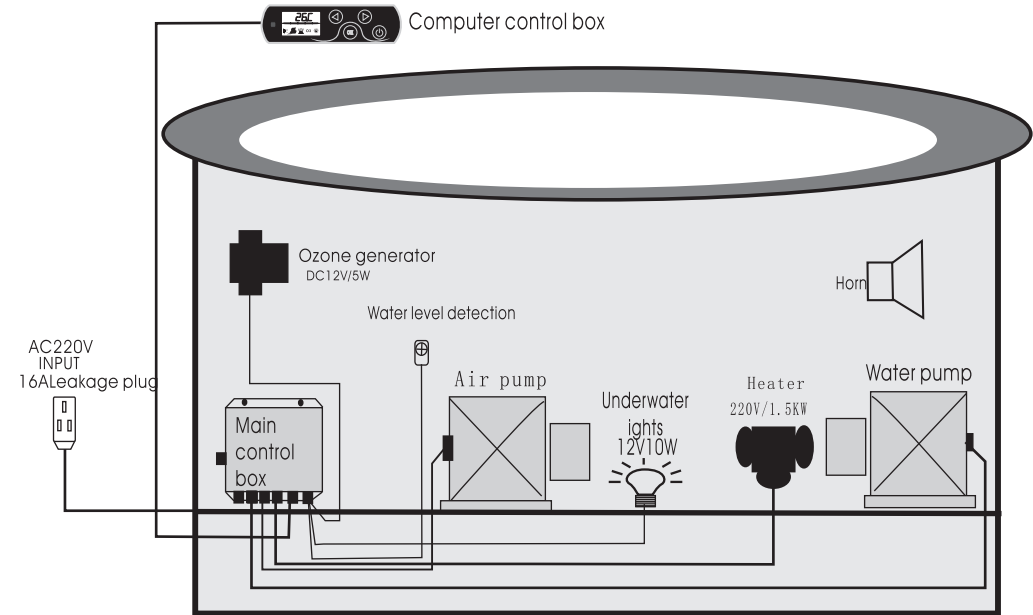
1. Microcomputer automatically detects water level function
2. Surfing function
3. Bubble bath function
4. External heating thermostat
5. Underwater lights
6. Ozone disinfection function
7. Bluetooth playback

II. Technical Parameters:

1. power supply: AC190V--240V 50-60Hz
2. Pump power: \leq AC220V 1500W
3. Wind pump power: \leq AC220V 750W
4. Heater power: AC220V 1500W
5. Dielectric strength: 1500V 1minute
6. Leakage current: $<0.25\text{mA}$
7. Underwater light load: DC12V 10W
8. Ozone generator: DC12V 5W
9. Waterproof level: IPX4

III. System installation diagram:

(Installation configuration is subject to the selected model)



IV. System wiring diagram:

(The configuration is subject to the selected model)

